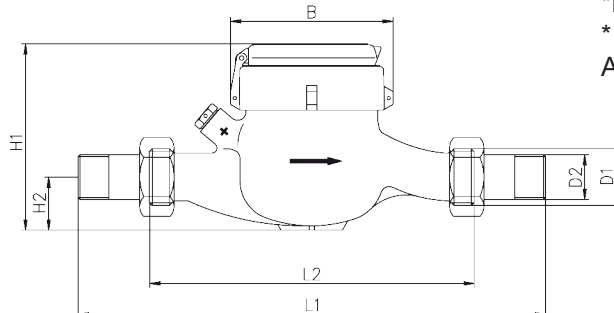


## TECHNICAL DATA MTW-MTW-I

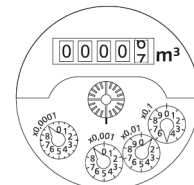
Nominal Diameter	DN		15mm	20mm	25mm	32mm	40mm	50mm
Nominal Flow	Qn	m <sup>3</sup> /h	1.5	2.5	3.5	6	10	15
Maximum Flow	Qmax	m <sup>3</sup> /h	3	5	7	12	20	30
Minimum Flow	Qmin	l/h	30	50	70	120	200	450
Transitional Flow	Qt	l/hr	120	200	280	480	800	3000
Starting Flow		l/h	4	10	10	18	40	25
Metrological class			B*H	B*H	B*H	B*H	B*H	B*H
			A*V	A*V	A*V	A*V	A*V	A*V
Display Range	min	l	0.05	0.05	0.05	0.05	0.05	0.05
	max	m <sup>3</sup>	99999	99999	99999	99999	99999	99999
Maximum Temperature		°C	90	90	90	90	90	90
Operating pressure, max.	PN	bar	16	16	16	16	16	16
Head loss at Qmax		bar	0.6	1	1	1	1	1
Pulse value		l/imp	100	100	100	100	100	100
Overall Length without conn.	L2	mm	165	190	260	260	300	300
Overall length with connectors.	L1	mm	250	288	378	378	438	438
Thread on meter	D1	mm	20	25	32	40	50	65
Thread on tail	D2	mm	15	20	25	32	40	50
Height	H1 k*	mm	120	115	140	140	168	-
	H1 m*	mm	125	120	145	145	170	190
	H2	mm	35	32	50	50	60	75
	H3	mm	15	15	15	15	15	15
Width	B	mm	95	95	100	100	131	165
Weight		kg	1.4	1.8	2.7	2.7	5.4	5.4



\*H = Horizontal

\* V = Vertical

All accuracies are listed as installed horizontal.





## MTW

### Multi-jet dry dial meters for hot water Class B

The hot water version of the multi-jet dry dial is ideal for measuring at temperatures of up to 90°C. The use of special materials allows accurate measuring with a higher temperature limit.

#### PERFORMANCE CHARACTERISTICS

- Viewing window made of high-quality UV-proof plastic
- Hermetically sealed roller capsule
- For horizontal piping
- Not pulse capable



## MTW-I

### Multi-jet dry dial meters for hot water with pulser Class B

This meter combines all of the advantages of the MTW and additionally offers remote readouts with a pulse unit, which allows connection to an automation system or remote readout modules.

#### PERFORMANCE CHARACTERISTICS

- Viewing window made of high-quality UV-proof plastic
- For horizontal piping
- Pulse unit (Reed switch) for remote readout systems
- Standard 1 pulse per 100 litres

ZENNER CODE	HYDROFLOW CODE	SIZE	SPECIAL FEATURES
136563 MTW-AM	WMZ15H	15mm	Warm
136564 MTW-AM	WMZ20H	20mm	Warm
136565 MTW-AM	WMZ25H	25mm	Warm
136566 MTW-AM	WMZ32H	32mm	Warm
136567 MTW-AM	WMZ40H	40mm	Warm
136568 MTW-AM	WMZ50H	50mm	Warm
142257 MTWI-AM	WMZ15HP	15mm	Warm Pulse Capable
142258 MTWI-AM	WMZ20HP	20mm	Warm Pulse Capable
142259 MTWI-AM	WMZ25HP	25mm	Warm Pulse Capable
142260 MTWI-AM	WMZ32HP	32mm	Warm Pulse Capable
129290 MTWI-AM	WMZ40HP	40mm	Warm Pulse Capable
129291 MTWI-AM	WMZ50HP	50mm	Warm Pulse Capable