

WPH-N 90°

Woltman meter with parallel turbine shaft Class B

WPH-N meters are used for measuring very small to large flow rates. They are capable of covering a large measuring range, with long-term accuracy. Low friction loss bearings guarantee the long life of the meter.

Reed sensors can be retrofitted without damaging the calibration seal. Then the meter can be integrated with data communication or automation and control systems in a simple and flexible way.

PERFORMANCE CHARACTERISTICS

- Low starting flow, high overload security
- Wide measuring range
- Removable measuring insert
- Low head loss
- Epoxy coated cast iron body.
- Hydraulic bearing for measuring stability
- Pulse Unit (Reed switch) for remote readout systems, sold separately.
- Standard 1 pulse per 100/1000 litres
- Protective metal cover
- Dry dial counter with large number rollers and condensation protection for visibility
- For hot water up to 90°C
- For horizontal, vertical and inclined installation positions



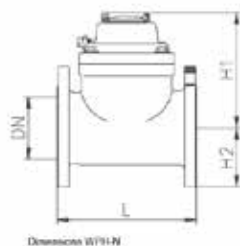
ZENNER CODE	HYDROFLOW CODE	SIZE	SPECIAL FEATURES
144507 WPH	WMZWPHT65	65mm	Hot
143355 WPH	WMZWPHT80	80mm	Hot
144508 WPH	WMZWPHT100	100mm	Hot
144509 WPH	WMZWPHT150	150mm	Hot
144510 WPH	WMZWPHT200	200mm	Hot
122141	WMZWPH-N		Reed Switch/Pulse for Woltman Meters WPH

TECHNICAL DATA WPH-N							
Nominal Diameter	DN		65mm	80mm	100mm	150mm	200mm
Nominal Flow	Qn	m ³ /h	25	40	60	150	250
Maximum Flow (short Term)	Qmax	m ³ /h	120	150	250	350	650
Maximum flow (constant)		m ³ /h	50	80	120	300	500
Transitional flow	Qt	m ³ /h	3.75	6	9	22.5	37.5
Minimum Flow	Qmin	m ³ /h	1	1.6	2.4	6	10
Flow rate with 0.1 bar head loss		m ³ /h	50	70	100	200	650
Metrological class			B*H	B*H	B*H	B*H	B*H
			A*V	A*V	A*V	A*V	A*V
Head loss at Qmax		bar	0.1	0.2	0.2	0.2	0.05
Display Range	min	l	2	2	2	20	20
	max	m ³	9999999	9999999	9999999	9999999	9999999
Maximum Temperature		°C	90	90	90	90	90
Operating pressure, max.	PN	bar	16	16	16	16	16
Pulse value		l/Imp	100/1000	100/1000	100/1000	100/1000	100/1000
Height	H	mm	218	280	290	320	375
Overall length	L	mm	200	225	250	300	350
Flange Diameter	D	mm	185	200	220	285	340

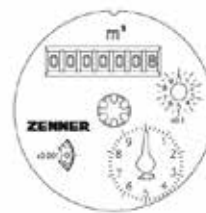
*H = Horizontal

* V = Vertical

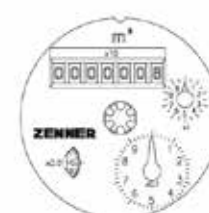
All accuracies are listed as installed horizontal.



Dimension WPH-N



Dial for DN 65-DN100



Dial for 150-DN200