

# Product Information/Specification Sheet

## Studor Mini-Vent (Air Admittance Valve for plumbing ventilation)

### Description

The Studor Mini-Vent AAV is an accepted alternative to replace all forms of conventional branch and stack venting. With localised active ventilation of the building drainage system it is proven that the Mini-Vent provides greater protection to prevent induced and self-siphonage of the fixture traps.

The Mini-Vent opens and admits fresh air when the negative (suction) pressure occurs from a fixture discharging into the system. This equalizes the pressure within the system and protects the trap seal. When the flow stops, the Mini-Vent closes by gravity, preventing any transmission of foul air.

The Mini-Vent is used as an alternative to extending the vent pipes through the roof or sidewall.

### Features

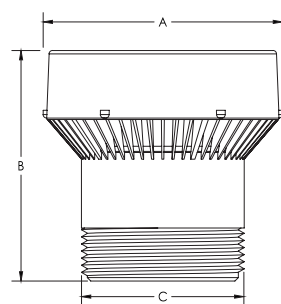
- Screening on the inside and outside of the Mini-Vent to protect the sealing membrane from foreign objects.
- Ability to divert condensation away from the sealing membrane.
- Prevents the release of foul air from the drainage system.
- Available in white ABS.
- As standard, the Mini-Vent is fitted with the push-fit Global Connector. For specific markets it may be provided with an alternative or no connector.

### Installation

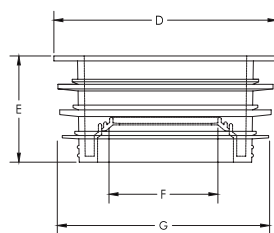
- The Mini-Vent should be connected to the piping in accordance with Studor's installation instructions.
- Refer to your local area regulations for open vent requirements.

### Warranty

The Studor products have a 10 year warranty period. Visit [www.studor.net](http://www.studor.net) for full details.

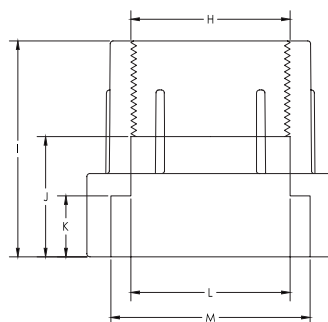


Mini-Vent



Global Connector

(supplied as standard)



US SCH40 Adaptor

(specific markets only, including North America, Canada and Mexico)

### Pipe sizes

Europe	AU/NZ	USA
DN 32-50	DN 32-50	1 1/4" - 2"

### Dimensions

Dimension	Metric (mm)	Imperial (inches)
A	Ø 70	Ø 2 12/16
B	67	2 10/16
C	Ø 47	Ø 1 14/16
D	Ø 67	Ø 2 10/16
E	31.9	1 4/16
F	Ø 33	Ø 1 5/16
G	Ø 64	2 8/16
H	Ø 49	Ø 1 15/16
I	68	2 11/16
J	38	1 8/16
K	19	1 2/16
L	Ø 51	Ø 2
M	Ø 63	Ø 2 8/16

Note: Dimensions for reference only

### Performance parameter

<b>Temperature range</b>	-20°C to +60°C (CE) -40°F to +150°F (ASSE)
<b>Opening pressure</b>	-70 Pa (-0.010 PSI)
<b>Max. pressure rating tightness</b>	10,000 Pa (1m/40" H <sub>2</sub> O) at 0 Pa or higher

Air flow capacity	Branch	Stack
Europe	7.5 l/s	7.5 l/s
AU/NZ	7.5 l/s / 94 FU	7.5 l/s / 7 FU
USA	1 to 160 DFU	8 to 24 DFU

### Materials

Component	Material
Mini-Vent cap & body	ABS
Mini-Vent membrane	Synthetic rubber
Global connector	TPE
US SCH40 adaptor	PVC

EN 12380		08
Akatherm BV, Industrieterrein 11, 5981 NK Panningen, The Netherlands		
Valve to ventilate drainage systems Designation: AI Airflow capacity: 7.5 l/s Airtightness tested at: 30/500/10000 Pa Range of temperature: -20°C to +60°C Effectiveness at temperatures below zero: -20°C Pipe material in accordance with: EN1329-1, EN1451-1, EN4514, EN12056-1 Pipe DN: 32, 40, 50, 63		